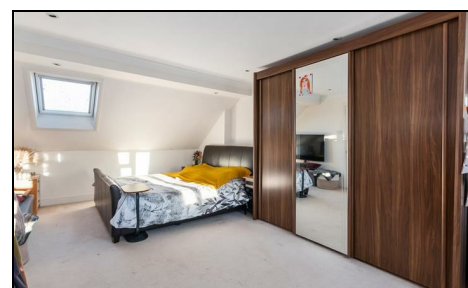
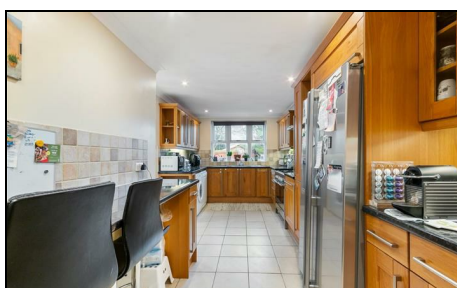


West Barnes Lane Motspur Park, KT3 6HZ

£650,000 Freehold



**** CHAIN FREE**** This attractive 1,593 FOUR BEDROOM, TWO BATHROOM 1920's Semi Detached House is a fantastic opportunity for an incoming buyer to move into and finish to their own desired tastes over time. Located within easy access to Raynes Park High Street and Station, Motspur Park Station, Shops and Park, well regarded schools and ample local amenities. Inside the house there is a charming front reception room with ornate fireplace and angled bay window, a separate dining room, an extended kitchen with breakfast bar, conservatory extension and paved rear garden. On the first floor are two very good sized double bedrooms, a neutrally decorated family bathroom and an additional single bedroom. The loft has been converted creating a spacious master bedroom with en-suite.

A bright dining room with a wooden floor. A rectangular table is covered with a yellow tablecloth and surrounded by white and dark red chairs. A chandelier hangs from the ceiling. A sideboard with a black electronic device and a small plant is visible on the left. Large windows with white frames and curtains are on the right. A pinkish-brown accent wall is visible in the background.

